

Summary of MYDAUS/YTS 2006 Results
for
OSA Region II

Prepared
By



Portland, Maine

for
The Maine Center for Disease Control and Prevention
and
The Office of Substance Abuse,
Bureau of Health and Human Services

August, 2006

TABLE OF CONTENTS

	Page
Understanding the Data.....	i
Student Participation by Grade as Percent of Enrollment	1
Summary of Substance Use	2
Substance Use by Grade	
Alcohol – Prior 30-Day Use	3
Cigarettes – Prior 30-Day Use	4
Marijuana – Prior 30-Day Use.....	5
Binge Drinking – During Prior 2 Weeks	6
Prescription Drugs – Ever Used.....	7
Inhalants – Ever Used.....	8
Stimulants – Ever Used.....	9
Substance Use Trends - 2000, 2002, 2004 and 2006	
Alcohol – Prior 30-Day Use	10
Cigarettes – Prior 30-Day Use	11
Marijuana – Prior 30-Day Use.....	12
Binge Drinking – During Prior 2 Weeks	13
Prescription Drugs – Ever Used.....	14
Inhalants – Ever Used.....	15
Stimulants – Ever Used.....	16
Prohibitive Behaviors – Prevalence during Prior Year.....	17
Pro-Social Behaviors - Prevalence during Prior Year	18
Students Feeling Unsafe at School – Prevalence by Grade	19
Risk and Protective Factors	
Grade 6: Risk Factors.....	20
Grade 6: Protective Factors.....	21
Grade 8: Risk Factors.....	22
Grade 8: Protective Factors.....	23
Grade 10: Risk Factors.....	24
Grade 10: Protective Factors.....	25
Grade 12: Risk Factors.....	26
Grade 12: Protective Factors.....	27

UNDERSTANDING THE DATA

Student Confidentiality

To protect student confidentiality, individual reports have not been generated for schools when fewer than 20 students participated in the MYDAUS/YTS. When fewer than 20 students in any one grade participated, the data for that grade was not reported. **Note: Table rows will be shaded in gray to identify grades where less than 20 students participated.**

Confidence Intervals

In the graphs on the following pages, the data labeled “%” is the weighted* proportion of students responding in a specific way to a question; for instance, 29.0% of Maine’s middle and high school students said they had consumed alcohol at least once in the 30 days prior to taking the MYDAUS/YTS. However, because not all of the eligible students answered that question (or even took the survey), we have to determine statistically how well the response of the participating students might represent the response of all the eligible students in the population (in our example, the population is the State of Maine). We did this by calculating the **95% Confidence Interval (CI)**, meaning that if all the eligible students in the population answered the question, we are 95% confident that their response would lie between the **Lower Confidence Limit (LCL)** and the **Upper Confidence Limit (UCL)**. The higher the proportion of eligible students in the population answering the survey question, the narrower the confidence interval and the more confidence we have that the results represent the experience of the student population as a whole. **Therefore, the higher the participation rate at your school and district, the more confidence you can have in those results.**

Comparing Local Data to Maine’s: Is the Difference Statistically Significant?

If the confidence interval around the local students’ response does not overlap the confidence interval around Maine’s response, then the local response is considered to be **Significantly Different** from Maine’s. If the local results are significantly lower, you will find a minus (-) under “Sig Diff”, and if the local results are higher, you will find a plus (+). **Please note that in many instances Maine's substance use has been higher than national rates, so you need to decide if “lower than Maine” is good enough.**

***Weighting the Data**

The students who participate in the MYDAUS/YTS may not represent all the eligible students in the population, relative to age and gender. Because grade and gender are known to influence results, we correct for under-representation by **weighting the data**. For example, say there were 200 students at your high school and 100 were male and 100 were female; all 100 female students took the survey but only 50 of the male students participated. We would then give each female’s response a weight of 1 and each male’s response a weight of 2. The actual weighting of the MYDAUS/YTS data is considerably more complex, and is discussed in the MYDAUS 2006 Technical Report, Appendix A - Methodology, Method of Weighting (<http://www.maine.gov/dhhs/osa/data/mydaus/mydaus2006.htm>).

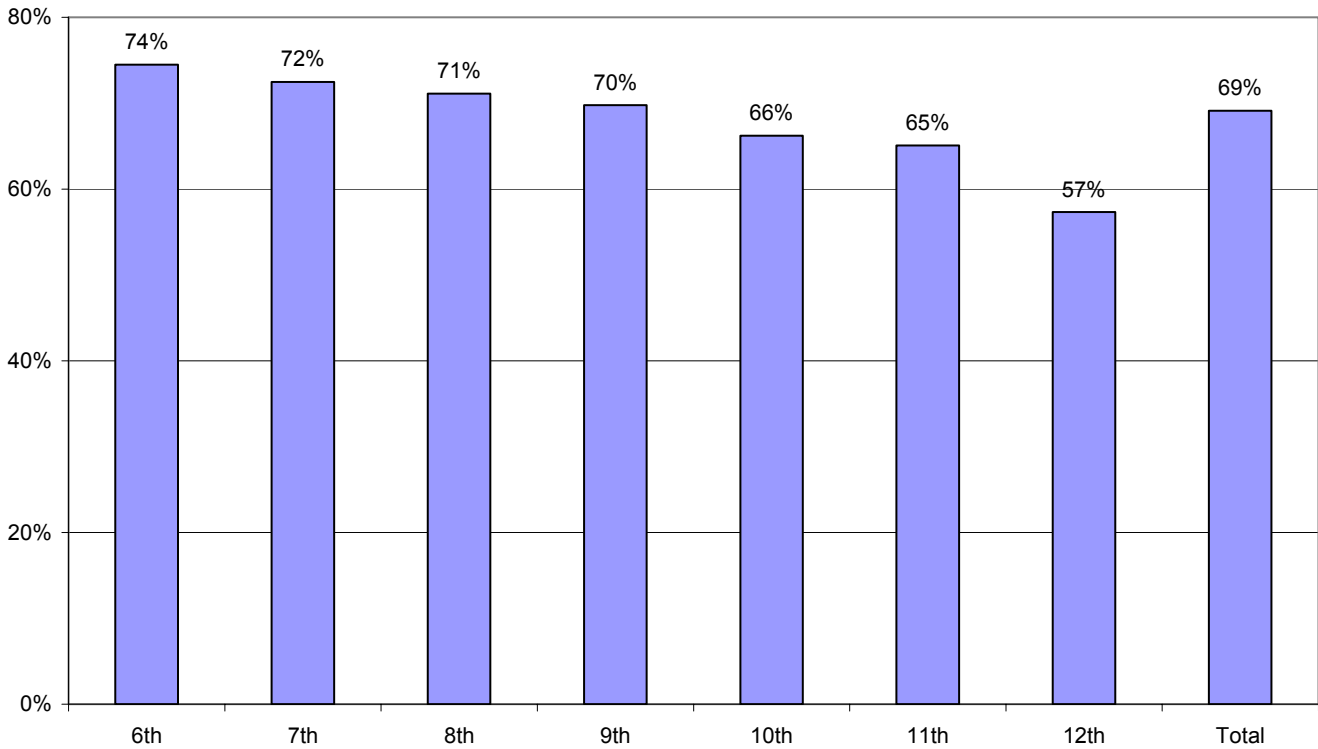
Additional Information

You can find additional reports (in the 2004 format) by going to the MYDAUS website home page (www.maine.gov/maineosa/survey/home.php) and clicking on the appropriate map (state, school, etc.) You can also access the **results for each of the questions** on the survey by clicking on the “pie chart” icon under the maps, and then choosing the desired category and question. Tips on how to use the data can be found in the MYDAUS/YTS user’s guide also linked to the home page.

Screening Out Unusable Surveys

There were several questions in the MYDAUS/YTS that were used to detect surveys that were answered untruthfully (usually 3-4% of the total). These surveys were not included in the data available on the MYDAUS website.

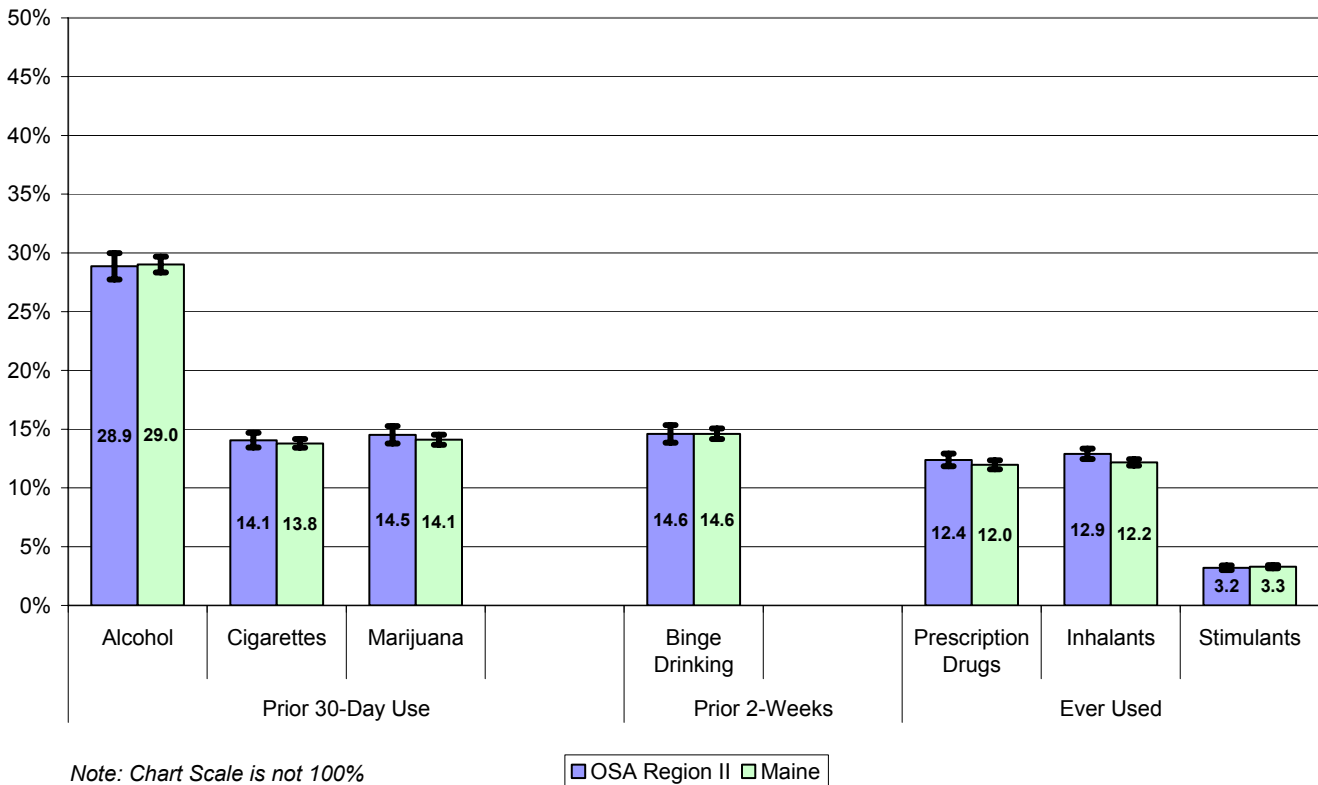
**Participation by Grade as Percentage of Enrollment
OSA Region II, 2006**



**Participation by Grade as Percentage of Enrollment
OSA Region II, 2006**

	6 th	7 th	8 th	9 th	10 th	11 th	12 th	Total
Number Enrolled	6,072	6,354	6,778	6,791	6,732	6,400	6,040	45,167
Number Participating	4,522	4,605	4,819	4,739	4,457	4,164	3,462	31,221
Percent Participating	74%	72%	71%	70%	66%	65%	57%	69%

**Summary of SUBSTANCE USE
OSA Region II vs Maine, Grades 6 - 12, 2006**



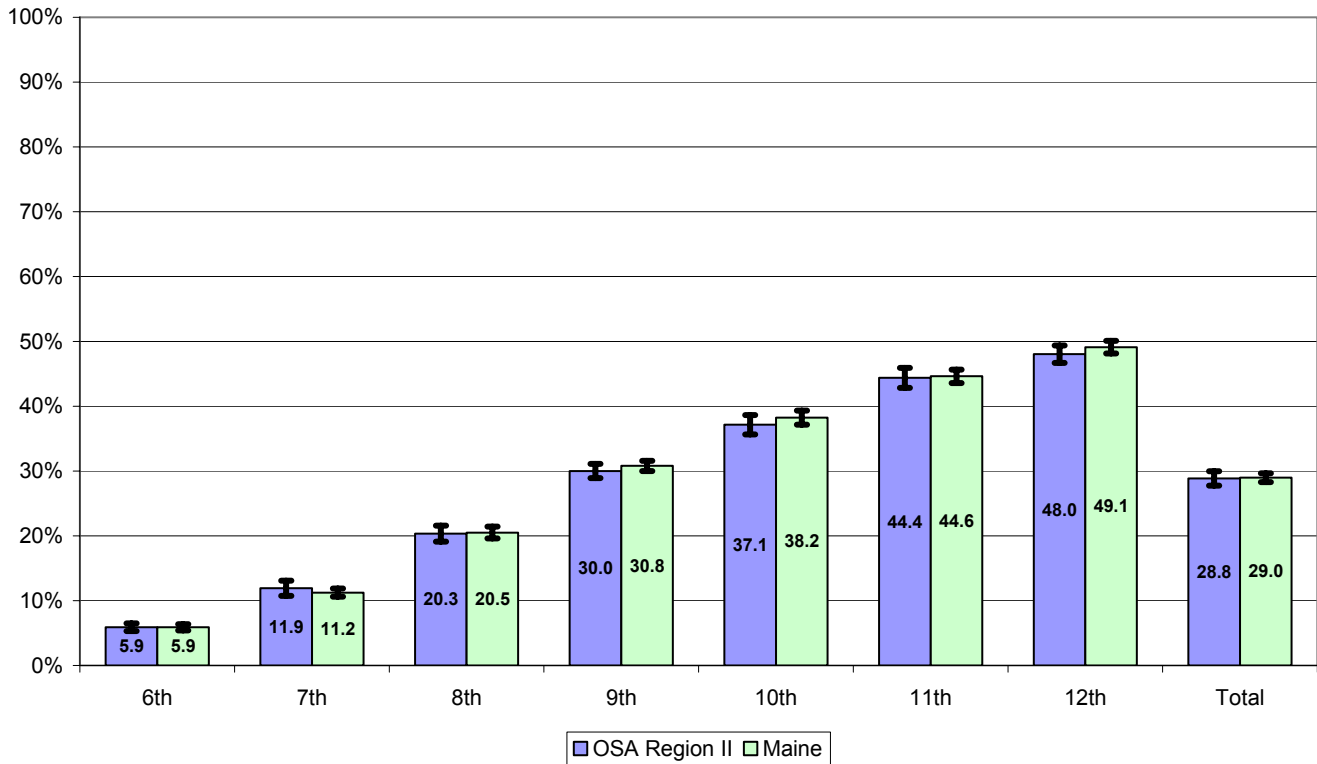
**Summary of SUBSTANCE USE
OSA Region II vs Maine, Grades 6-12, 2006**

		OSA Region II			Maine			Sig Diff
		LCL	%	UCL	LCL	%	UCL	
Prior 30-Day Use	Alcohol	27.7%	28.9%	30.0%	28.3%	29.0%	29.7%	
	Cigarettes	13.4%	14.1%	14.7%	13.4%	13.8%	14.2%	
	Marijuana	13.8%	14.5%	15.3%	13.7%	14.1%	14.5%	
Prior 2-Weeks	Binge Drinking	13.9%	14.6%	15.3%	14.2%	14.6%	15.1%	
Ever Used	Prescription Drugs	11.8%	12.4%	12.9%	11.6%	12.0%	12.4%	
	Inhalants	12.5%	12.9%	13.3%	11.9%	12.2%	12.4%	+
	Stimulants	3.0%	3.2%	3.4%	3.2%	3.3%	3.4%	

LCL: 95% Lower confidence limit. HCL: 95% Upper confidence limit.

Sig Diff: Significant difference at 95% confidence, where plus (+) is higher and minus (-) is lower.

**ALCOHOL - Prior 30-Day Use
OSA Region II vs Maine, by Grade, 2006**



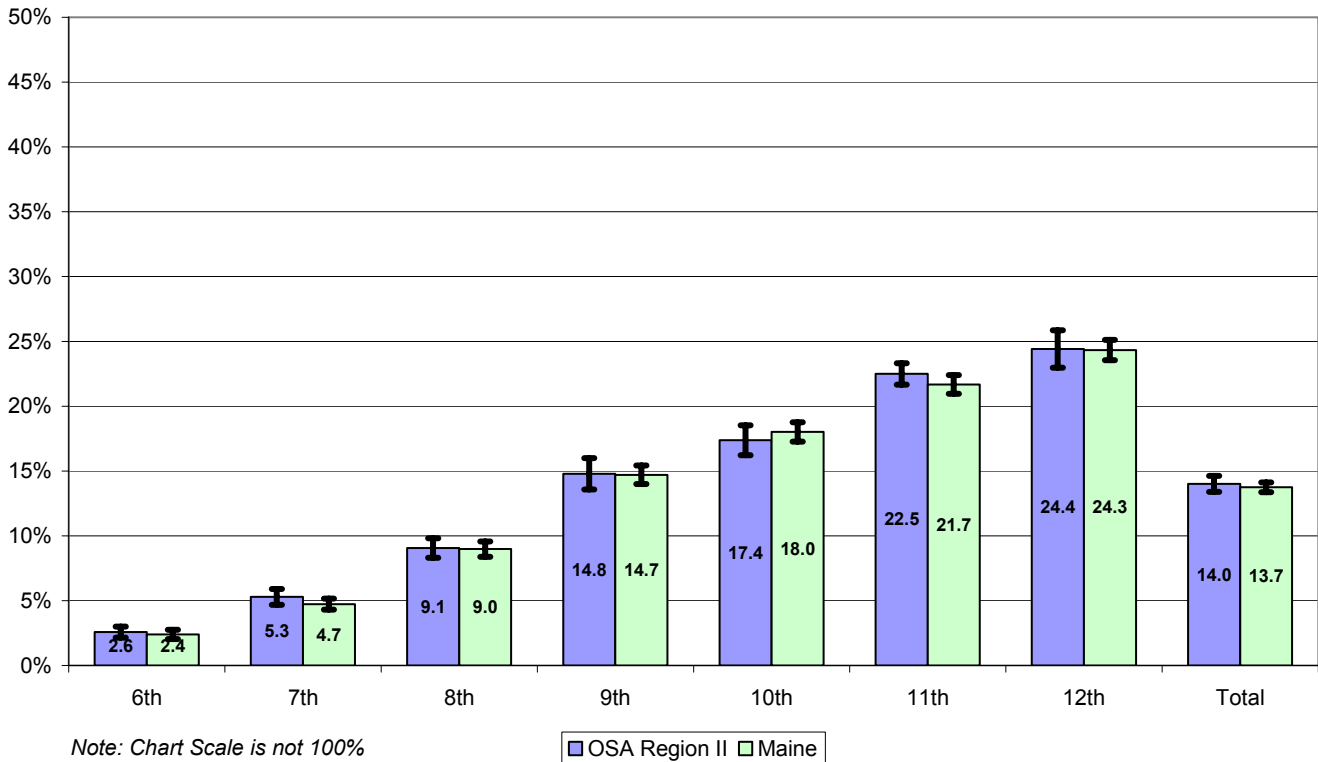
**ALCOHOL - Prior 30-Day Use
OSA Region II vs Maine, by Grade, 2006**

Grade	OSA Region II			Maine			Sig Diff
	LCL	%	UCL	LCL	%	UCL	
6th	5.3%	5.9%	6.5%	5.4%	5.9%	6.4%	
7th	10.7%	11.9%	13.1%	10.6%	11.2%	11.9%	
8th	19.1%	20.3%	21.6%	19.6%	20.5%	21.4%	
9th	28.9%	30.0%	31.1%	30.0%	30.8%	31.6%	
10th	35.6%	37.1%	38.6%	37.2%	38.2%	39.3%	
11th	42.8%	44.4%	45.9%	43.6%	44.6%	45.6%	
12th	46.7%	48.0%	49.4%	48.1%	49.1%	50.1%	
Total	27.7%	28.8%	30.0%	28.3%	29.0%	29.7%	

LCL: 95% Lower confidence limit. HCL: 95% Upper confidence limit.

Sig Diff: Significant difference at 95% confidence, where plus (+) is higher and minus (-) is lower.

**CIGARETTES - Prior 30-Day Use
OSA Region II vs Maine, by Grade, 2006**

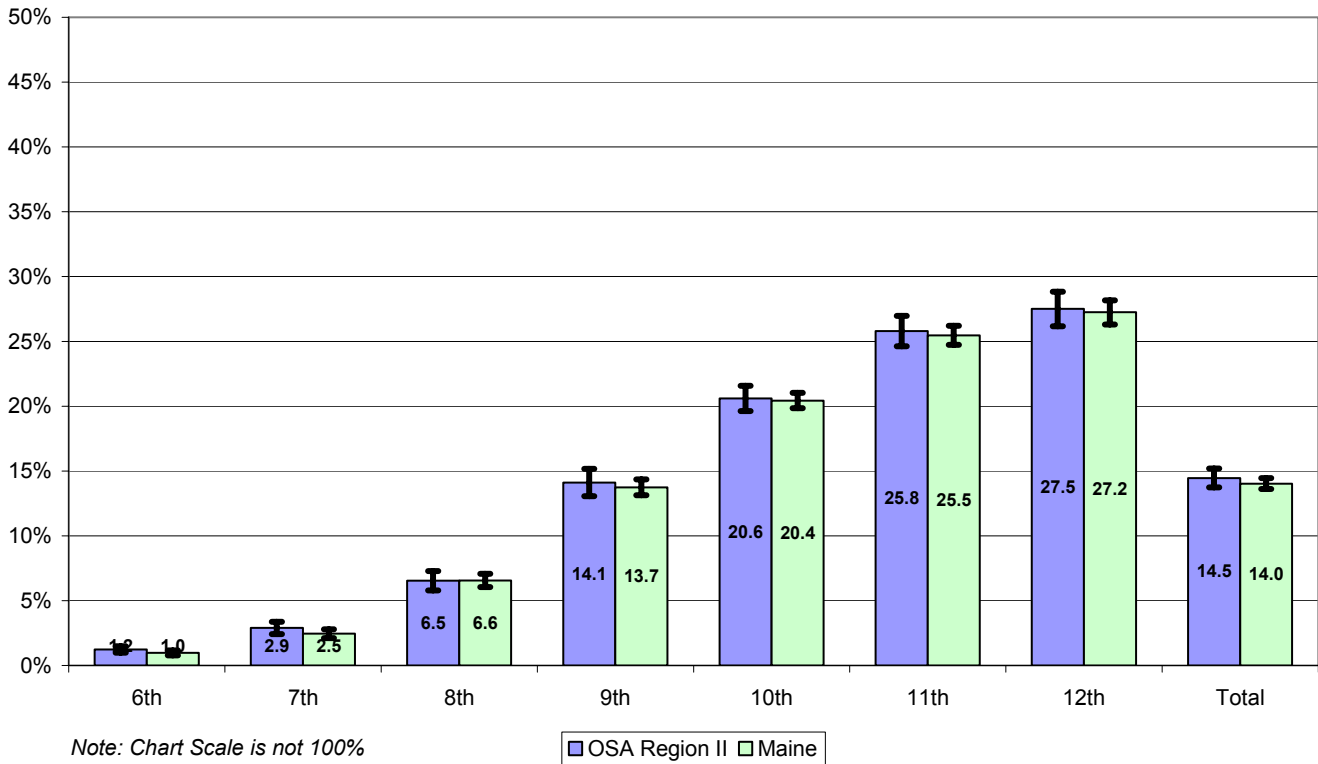


**CIGARETTES - Prior 30-Day Use
OSA Region II vs Maine, by Grade, 2006**

Grade	OSA Region II			Maine			Sig Diff
	LCL	%	UCL	LCL	%	UCL	
6th	2.1%	2.6%	3.0%	2.0%	2.4%	2.8%	
7th	4.7%	5.3%	5.9%	4.3%	4.7%	5.1%	
8th	8.3%	9.1%	9.8%	8.4%	9.0%	9.6%	
9th	13.6%	14.8%	16.0%	14.0%	14.7%	15.4%	
10th	16.2%	17.4%	18.5%	17.3%	18.0%	18.8%	
11th	21.7%	22.5%	23.3%	21.0%	21.7%	22.4%	
12th	23.0%	24.4%	25.9%	23.5%	24.3%	25.1%	
Total	13.4%	14.0%	14.6%	13.4%	13.7%	14.1%	

*LCL: 95% Lower confidence limit. HCL: 95% Upper confidence limit.
Sig Diff: Significant difference at 95% confidence, where plus (+) is higher and minus (-) is lower.*

**MARIJUANA - Prior 30-Day Use
OSA Region II vs Maine, by Grade, 2006**



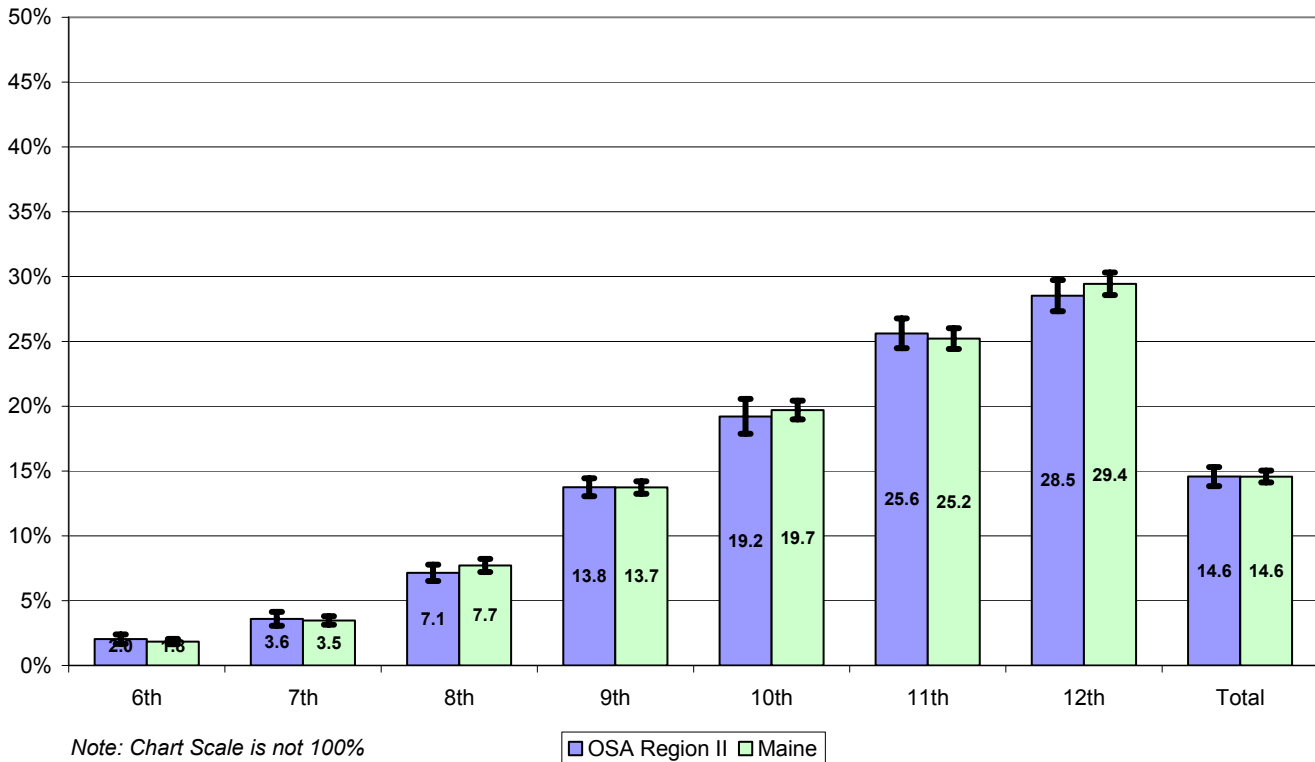
**MARIJUANA - Prior 30-Day Use
OSA Region II vs Maine, by Grade, 2006**

Grade	OSA Region II			Maine			Sig Diff
	LCL	%	UCL	LCL	%	UCL	
6th	1.0%	1.2%	1.5%	0.8%	1.0%	1.2%	
7th	2.4%	2.9%	3.4%	2.1%	2.5%	2.8%	
8th	5.8%	6.5%	7.3%	6.0%	6.6%	7.1%	
9th	13.0%	14.1%	15.2%	13.1%	13.7%	14.3%	
10th	19.6%	20.6%	21.6%	19.8%	20.4%	21.0%	
11th	24.6%	25.8%	27.0%	24.7%	25.5%	26.2%	
12th	26.2%	27.5%	28.8%	26.3%	27.2%	28.2%	
Total	13.7%	14.5%	15.2%	13.6%	14.0%	14.5%	

LCL: 95% Lower confidence limit. HCL: 95% Upper confidence limit.

Sig Diff: Significant difference at 95% confidence, where plus (+) is higher and minus (-) is lower.

**BINGE DRINKING - Prior 2 Weeks
OSA Region II vs Maine, by Grade, 2006**

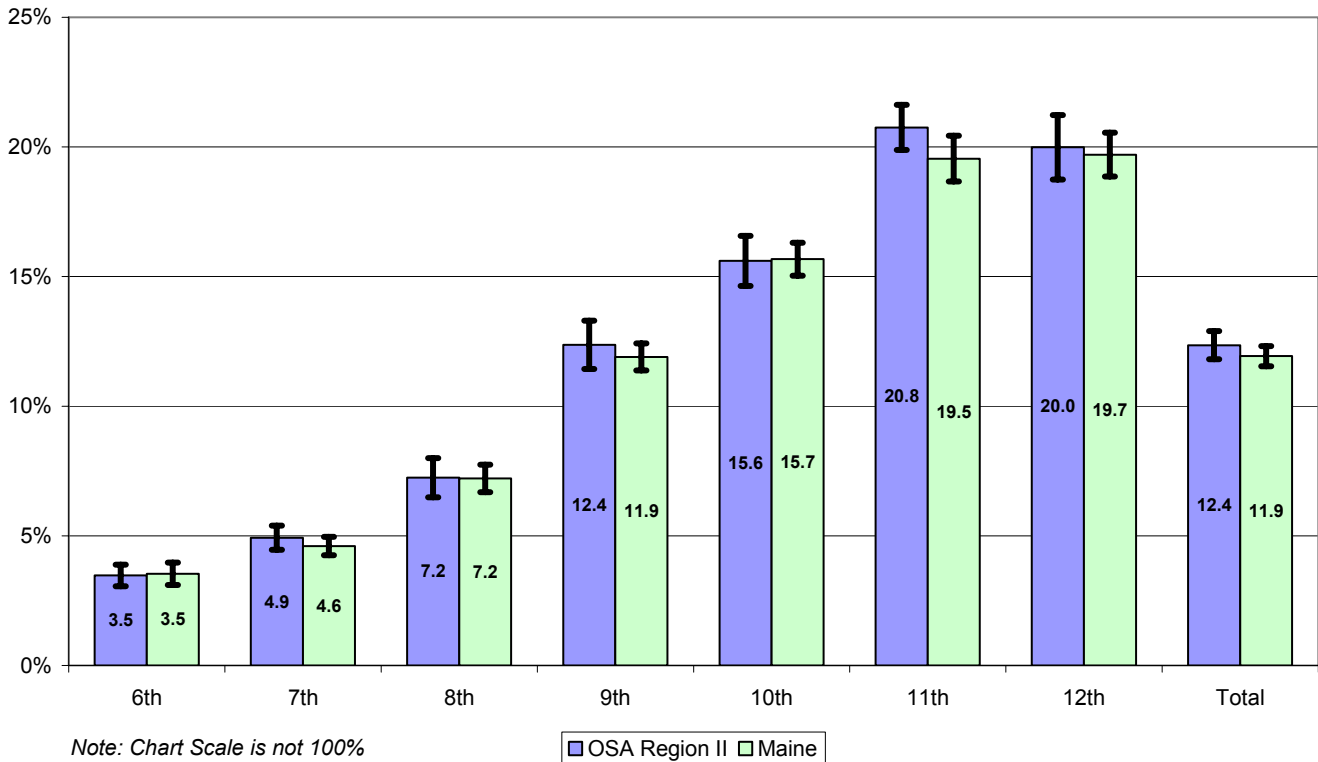


**BINGE DRINKING - Prior 2 Weeks
OSA Region II vs Maine, by Grade, 2006**

Grade	OSA Region II			Maine			Sig Diff
	LCL	%	UCL	LCL	%	UCL	
6th	1.7%	2.0%	2.4%	1.6%	1.8%	2.1%	
7th	3.1%	3.6%	4.1%	3.1%	3.5%	3.8%	
8th	6.5%	7.1%	7.8%	7.2%	7.7%	8.2%	
9th	13.1%	13.8%	14.4%	13.2%	13.7%	14.2%	
10th	17.9%	19.2%	20.6%	19.0%	19.7%	20.4%	
11th	24.5%	25.6%	26.8%	24.4%	25.2%	26.0%	
12th	27.3%	28.5%	29.7%	28.6%	29.4%	30.3%	
Total	13.8%	14.6%	15.3%	14.1%	14.6%	15.0%	

*LCL: 95% Lower confidence limit. HCL: 95% Upper confidence limit.
Sig Diff: Significant difference at 95% confidence, where plus (+) is higher and minus (-) is lower.*

**PRESCRIPTION DRUGS - Ever Used
OSA Region II vs Maine, by Grade, 2006**



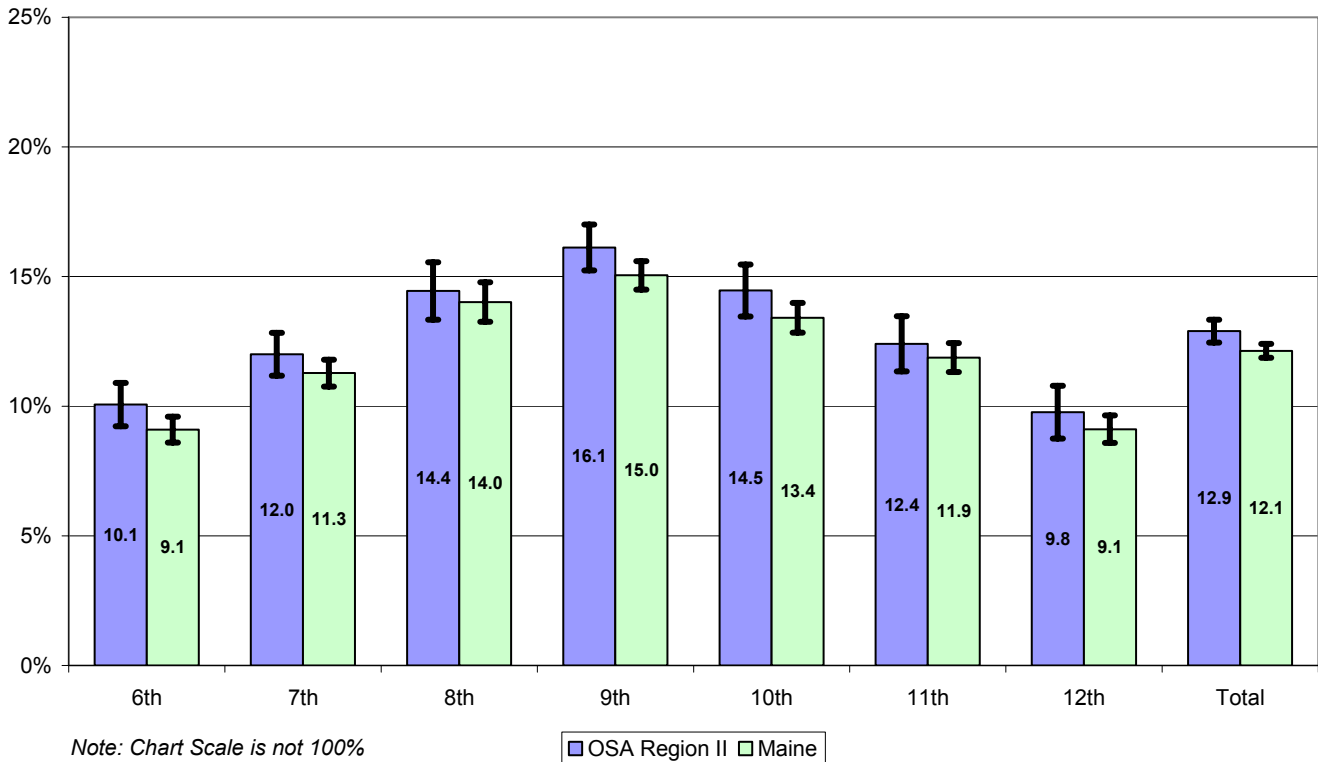
**PRESCRIPTION DRUGS - Ever Used
OSA Region II vs Maine, by Grade, 2006**

Grade	OSA Region II			Maine			Sig Diff
	LCL	%	UCL	LCL	%	UCL	
6th	3.1%	3.5%	3.9%	3.1%	3.5%	4.0%	
7th	4.5%	4.9%	5.4%	4.2%	4.6%	5.0%	
8th	6.5%	7.2%	8.0%	6.7%	7.2%	7.7%	
9th	11.4%	12.4%	13.3%	11.4%	11.9%	12.4%	
10th	14.6%	15.6%	16.6%	15.0%	15.7%	16.3%	
11th	19.9%	20.8%	21.6%	18.7%	19.5%	20.4%	
12th	18.7%	20.0%	21.2%	18.9%	19.7%	20.5%	
Total	11.8%	12.4%	12.9%	11.5%	11.9%	12.3%	

LCL: 95% Lower confidence limit. HCL: 95% Upper confidence limit.

Sig Diff: Significant difference at 95% confidence, where plus (+) is higher and minus (-) is lower.

**INHALANTS - Ever Used
OSA Region II vs Maine, by Grade, 2006**

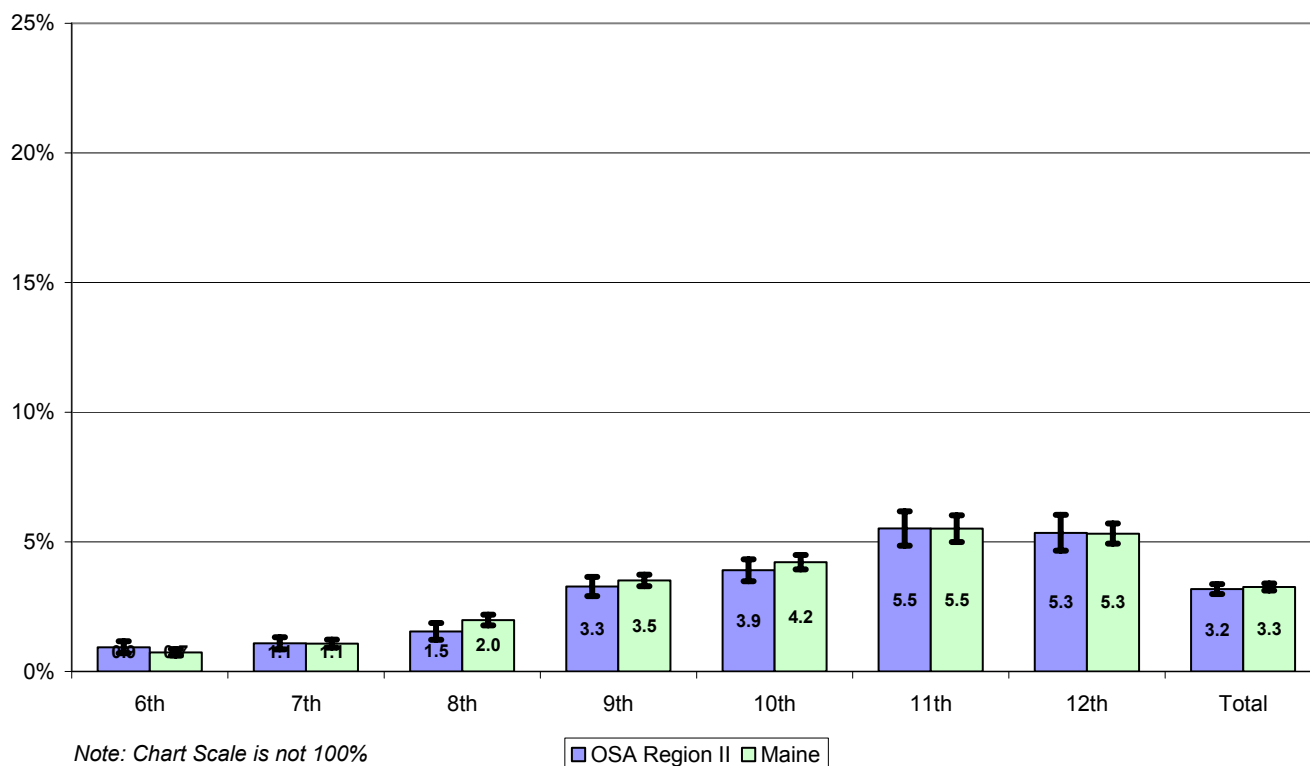


**INHALANTS - Ever Used
OSA Region II vs Maine, by Grade, 2006**

Grade	OSA Region II			Maine			Sig Diff
	LCL	%	UCL	LCL	%	UCL	
6th	9.2%	10.1%	10.9%	8.6%	9.1%	9.6%	
7th	11.2%	12.0%	12.8%	10.8%	11.3%	11.8%	
8th	13.3%	14.4%	15.6%	13.3%	14.0%	14.8%	
9th	15.2%	16.1%	17.0%	14.5%	15.0%	15.6%	
10th	13.5%	14.5%	15.5%	12.8%	13.4%	14.0%	
11th	11.3%	12.4%	13.5%	11.3%	11.9%	12.4%	
12th	8.8%	9.8%	10.8%	8.6%	9.1%	9.6%	
Total	12.4%	12.9%	13.3%	11.9%	12.1%	12.4%	+

*LCL: 95% Lower confidence limit. HCL: 95% Upper confidence limit.
Sig Diff: Significant difference at 95% confidence, where plus (+) is higher and minus (-) is lower.*

**STIMULANTS - Ever Used
OSA Region II vs Maine, by Grade, 2006**

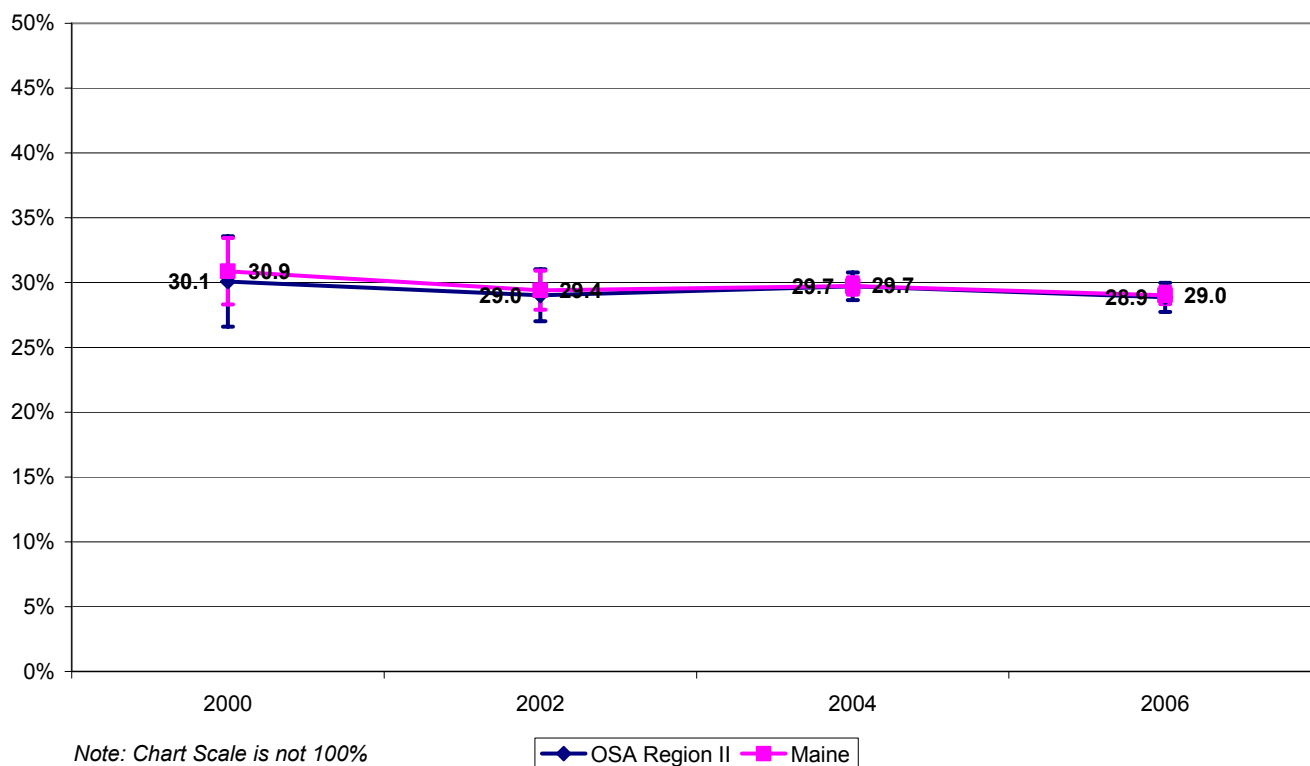


**STIMULANTS - Ever Used
OSA Region II vs Maine, by Grade, 2006**

Grade	OSA Region II			Maine			Sig Diff
	LCL	%	UCL	LCL	%	UCL	
6th	0.7%	0.9%	1.2%	0.6%	0.7%	0.9%	
7th	0.8%	1.1%	1.3%	0.9%	1.1%	1.2%	
8th	1.2%	1.5%	1.9%	1.8%	2.0%	2.2%	
9th	2.9%	3.3%	3.7%	3.3%	3.5%	3.7%	
10th	3.5%	3.9%	4.3%	3.9%	4.2%	4.5%	
11th	4.8%	5.5%	6.2%	5.0%	5.5%	6.0%	
12th	4.7%	5.3%	6.0%	4.9%	5.3%	5.7%	
Total	3.0%	3.2%	3.4%	3.1%	3.3%	3.4%	

*LCL: 95% Lower confidence limit. HCL: 95% Upper confidence limit.
Sig Diff: Significant difference at 95% confidence, where plus (+) is higher and minus (-) is lower.*

ALCOHOL - Trend in Prior 30-Day Use OSA Region II vs Maine



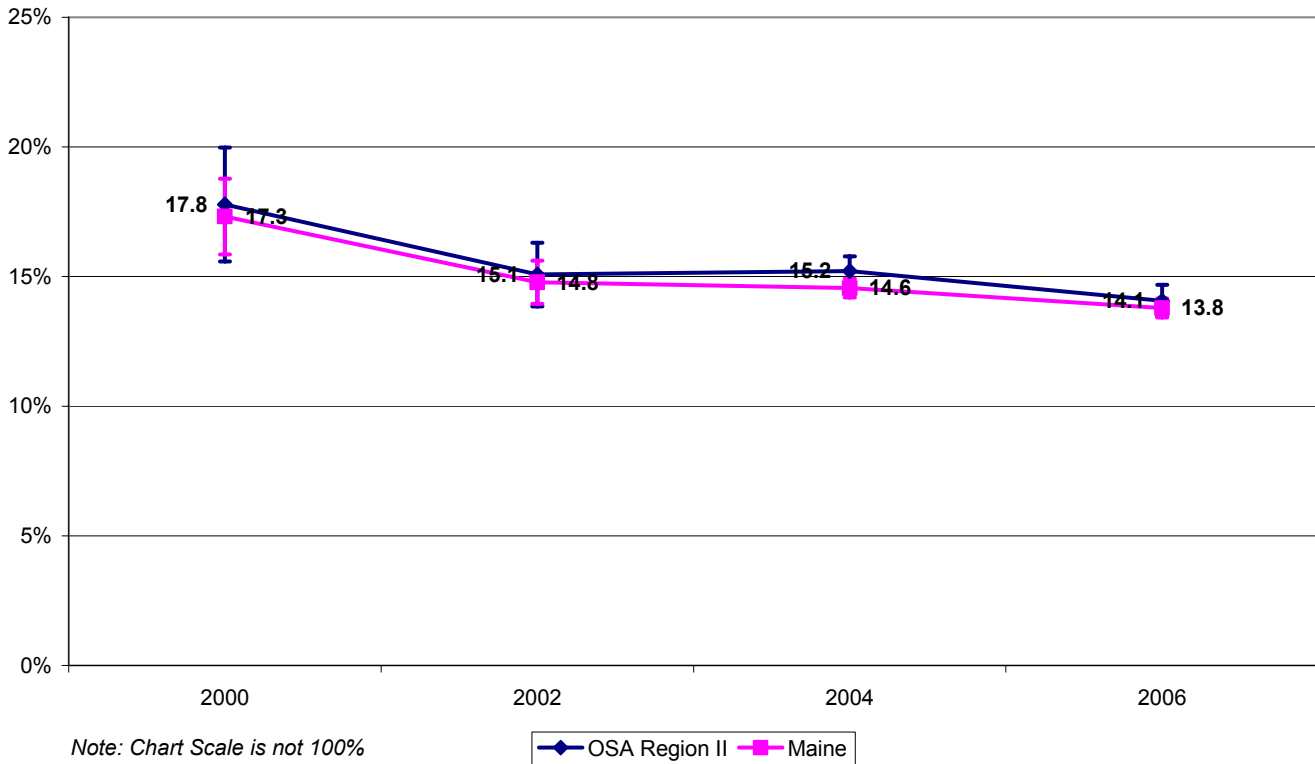
ALCOHOL - Trend in Prior 30-Day Use OSA Region II vs Maine

Year	OSA Region II			Maine			Sig Diff
	LCL	%	UCL	LCL	%	UCL	
2000	26.6%	30.1%	33.6%	28.3%	30.9%	33.4%	
2002	27.0%	29.0%	31.0%	27.9%	29.4%	30.9%	
2004	28.6%	29.7%	30.8%	29.1%	29.7%	30.4%	
2006	27.7%	28.9%	30.0%	28.3%	29.0%	29.7%	

LCL: 95% Lower confidence limit. HCL: 95% Upper confidence limit.

Sig Diff: Significant difference at 95% confidence, where plus (+) is higher and minus (-) is lower.

CIGARETTES - Trend in Prior 30-Day Use OSA Region II vs Maine



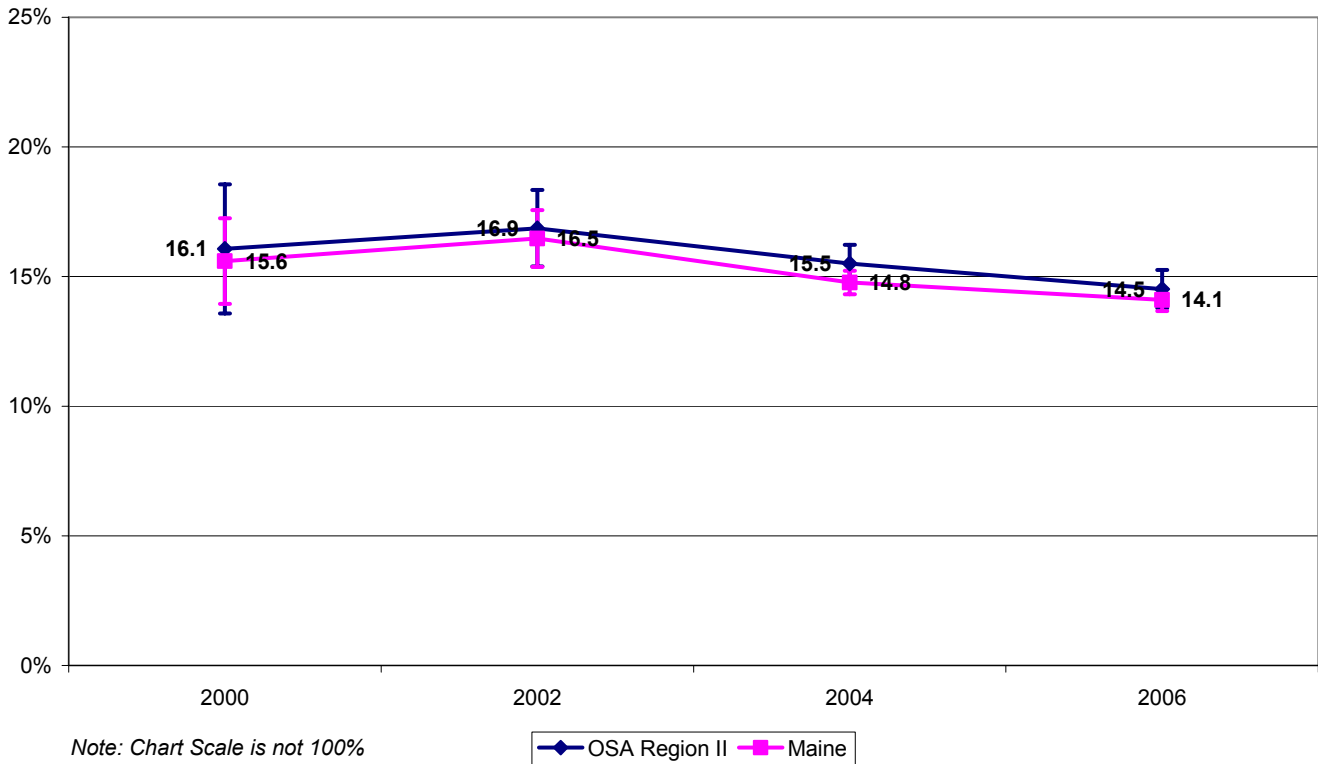
CIGARETTES - Trend in Prior 30-Day Use OSA Region II vs Maine

Year	OSA Region II			Maine			Sig Diff
	LCL	%	UCL	LCL	%	UCL	
2000	15.6%	17.8%	20.0%	15.8%	17.3%	18.8%	
2002	13.8%	15.1%	16.3%	13.9%	14.8%	15.6%	
2004	14.6%	15.2%	15.8%	14.2%	14.6%	14.9%	
2006	13.4%	14.1%	14.7%	13.4%	13.8%	14.2%	

LCL: 95% Lower confidence limit. HCL: 95% Upper confidence limit.

Sig Diff: Significant difference at 95% confidence, where plus (+) is higher and minus (-) is lower.

MARIJUANA - Trend in Prior 30-Day Use OSA Region II vs Maine



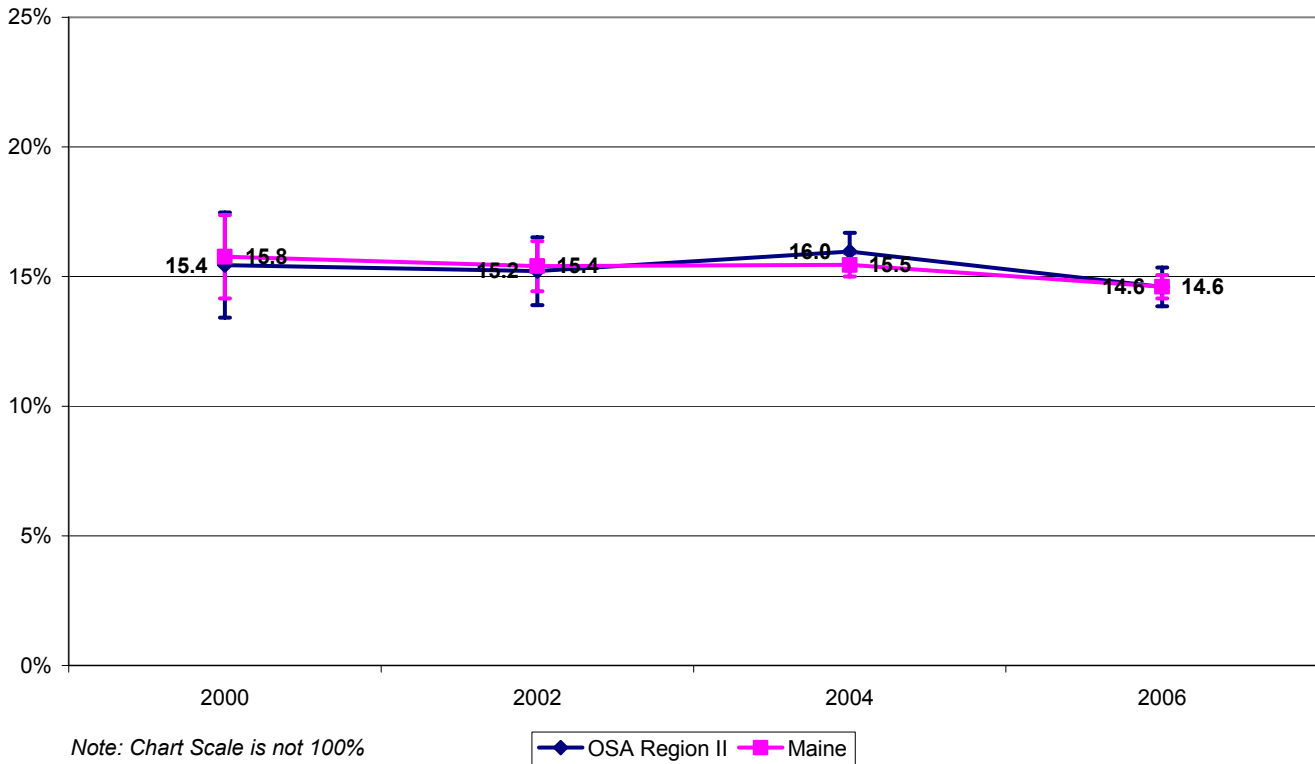
MARIJUANA - Trend in Prior 30-Day Use OSA Region II vs Maine

Year	OSA Region II			Maine			Sig Diff
	LCL	%	UCL	LCL	%	UCL	
2000	13.6%	16.1%	18.6%	13.9%	15.6%	17.2%	
2002	15.4%	16.9%	18.3%	15.4%	16.5%	17.6%	
2004	14.8%	15.5%	16.2%	14.3%	14.8%	15.2%	
2006	13.8%	14.5%	15.3%	13.7%	14.1%	14.5%	

LCL: 95% Lower confidence limit. HCL: 95% Upper confidence limit.

Sig Diff: Significant difference at 95% confidence, where plus (+) is higher and minus (-) is lower.

BINGE DRINKING - Trend in Prior 2 Weeks OSA Region II vs Maine



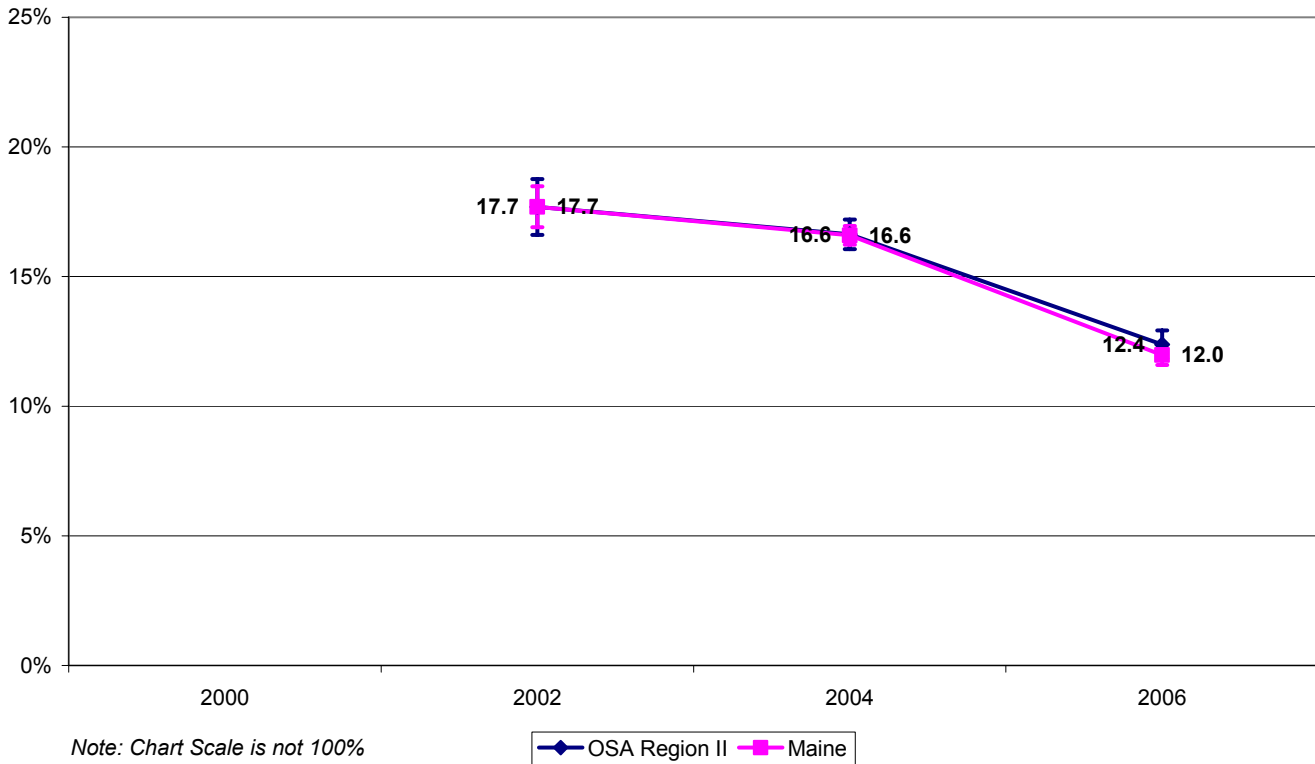
BINGE DRINKING - Trend in Prior 2 Weeks OSA Region II vs Maine

Year	OSA Region II			Maine			Sig Diff
	LCL	%	UCL	LCL	%	UCL	
2000	13.4%	15.4%	17.5%	14.2%	15.8%	17.4%	
2002	13.9%	15.2%	16.5%	14.4%	15.4%	16.4%	
2004	15.2%	16.0%	16.7%	15.0%	15.5%	15.9%	
2006	13.9%	14.6%	15.3%	14.2%	14.6%	15.1%	

LCL: 95% Lower confidence limit. HCL: 95% Upper confidence limit.

Sig Diff: Significant difference at 95% confidence, where plus (+) is higher and minus (-) is lower.

**PRESCRIPTION DRUGS - Trend in Ever Used
OSA Region II vs Maine**



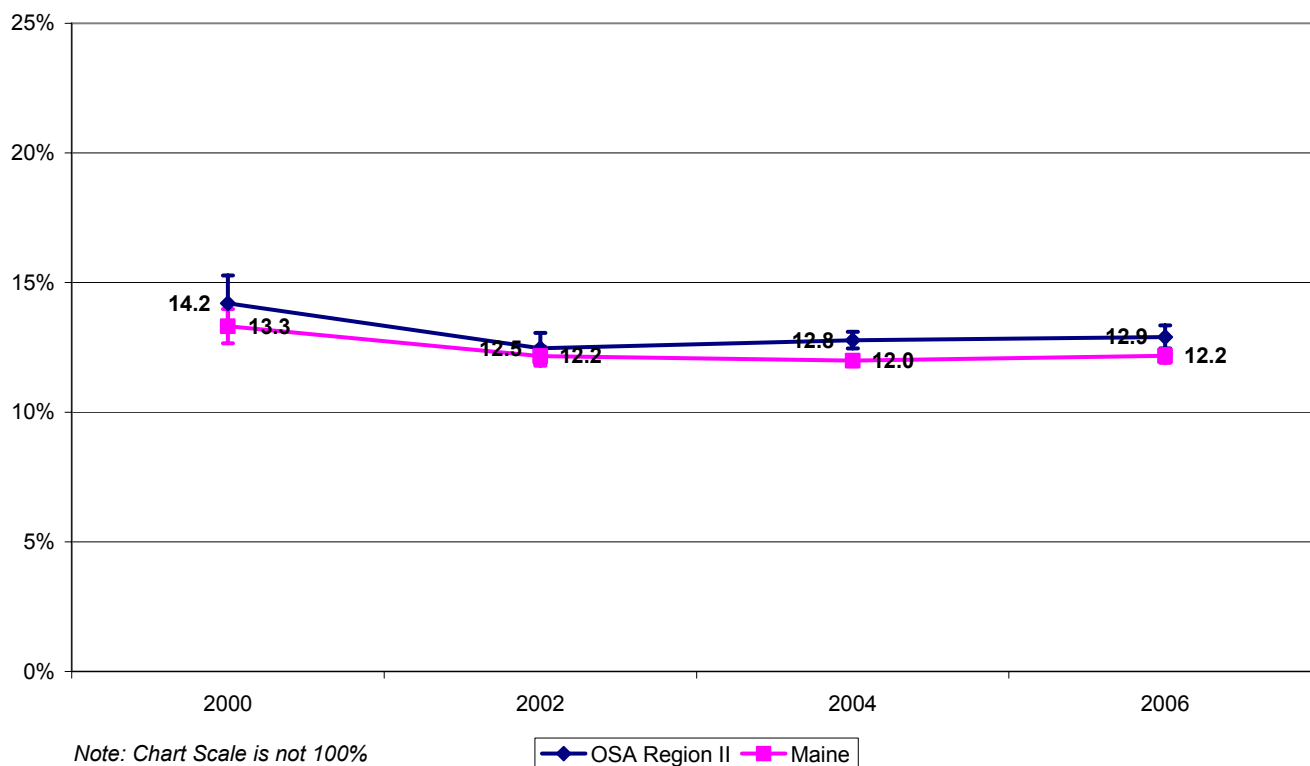
**PRESCRIPTION DRUGS - Trend in Ever Used
OSA Region II vs Maine**

Year	OSA Region II			Maine			Sig Diff
	LCL	%	UCL	LCL	%	UCL	
2000	-	-	-	-	-	-	
2002	16.6%	17.7%	18.8%	16.9%	17.7%	18.5%	
2004	16.1%	16.6%	17.2%	16.2%	16.6%	17.0%	
2006	11.8%	12.4%	12.9%	11.6%	12.0%	12.4%	

LCL: 95% Lower confidence limit. HCL: 95% Upper confidence limit.

Sig Diff: Significant difference at 95% confidence, where plus (+) is higher and minus (-) is lower.

INHALANTS - Trend in Ever Used OSA Region II vs Maine



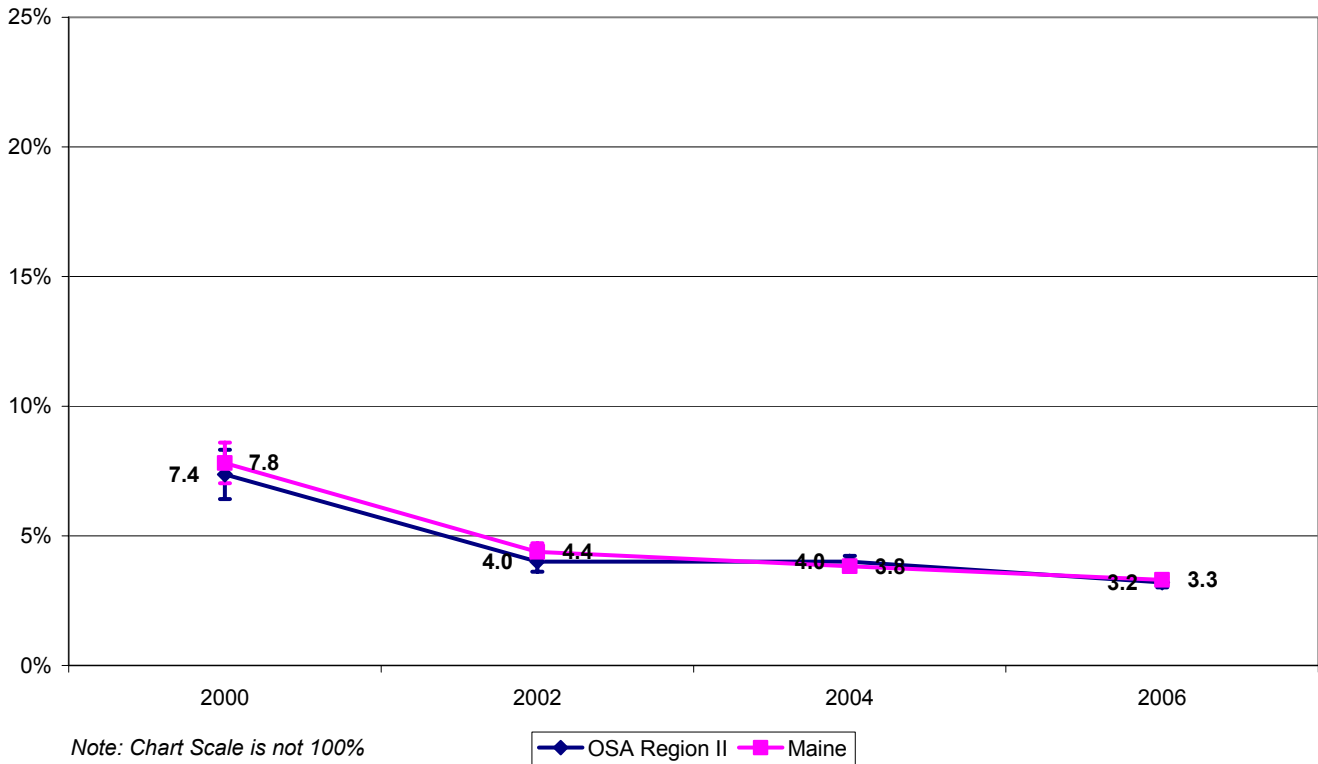
INHALANTS - Trend in Ever Used OSA Region II vs Maine

Year	OSA Region II			Maine			Sig Diff
	LCL	%	UCL	LCL	%	UCL	
2000	13.1%	14.2%	15.3%	12.7%	13.3%	14.0%	
2002	11.9%	12.5%	13.1%	11.8%	12.2%	12.5%	
2004	12.5%	12.8%	13.1%	11.8%	12.0%	12.2%	+
2006	12.5%	12.9%	13.3%	11.9%	12.2%	12.4%	+

LCL: 95% Lower confidence limit. HCL: 95% Upper confidence limit.

Sig Diff: Significant difference at 95% confidence, where plus (+) is higher and minus (-) is lower.

STIMULANTS - Trend in Ever Used OSA Region II vs Maine



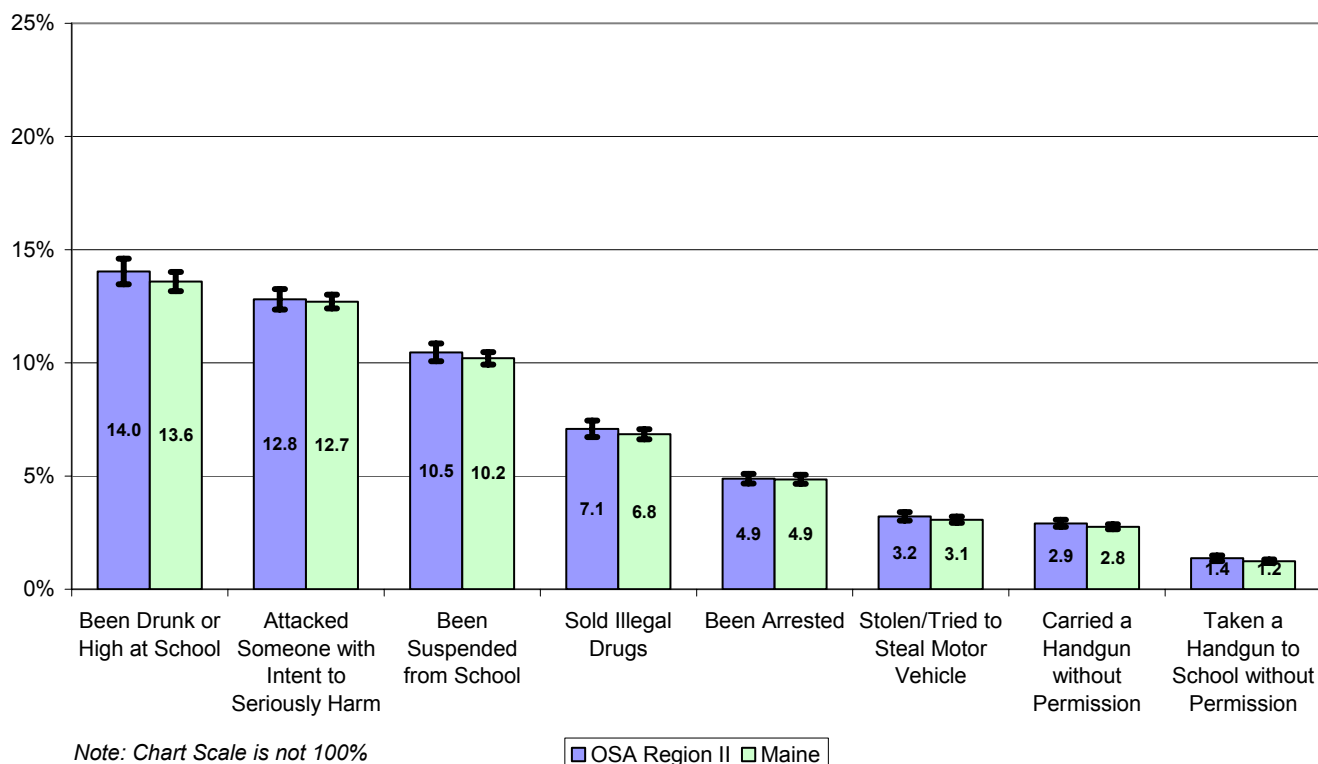
STIMULANTS - Trend in Ever Used OSA Region II vs Maine

Year	OSA Region II			Maine			Sig Diff
	LCL	%	UCL	LCL	%	UCL	
2000	6.4%	7.4%	8.3%	7.0%	7.8%	8.6%	
2002	3.6%	4.0%	4.4%	4.0%	4.4%	4.7%	
2004	3.8%	4.0%	4.2%	3.7%	3.8%	4.0%	
2006	3.0%	3.2%	3.4%	3.2%	3.3%	3.4%	

LCL: 95% Lower confidence limit. HCL: 95% Upper confidence limit.

Sig Diff: Significant difference at 95% confidence, where plus (+) is higher and minus (-) is lower.

**PROHIBITED BEHAVIORS, Prevalence during Prior Year
OSA Region II vs Maine, Grades 6-12, 2006**



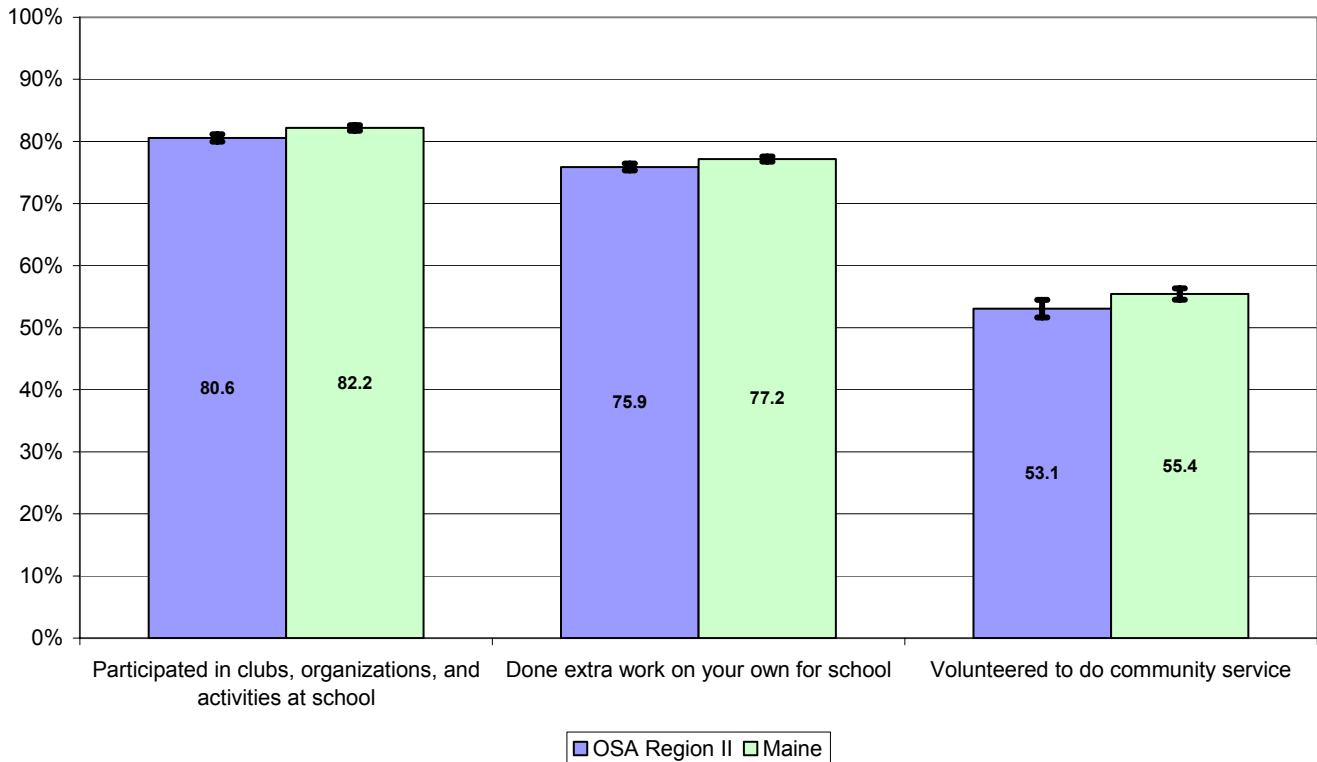
**PROHIBITED BEHAVIORS, Prevalence during Prior Year
OSA Region II vs Maine, Grades 6-12, 2006**

Behavior	OSA Region II			Maine			Sig Diff
	LCL	%	UCL	LCL	%	UCL	
Been Drunk or High at School	13.5%	14.0%	14.6%	13.2%	13.6%	14.0%	
Attacked Someone with Intent to Seriously Harm	12.4%	12.8%	13.3%	12.4%	12.7%	13.0%	
Been Suspended from School	10.1%	10.5%	10.9%	9.9%	10.2%	10.5%	
Sold Illegal Drugs	6.7%	7.1%	7.4%	6.6%	6.8%	7.1%	
Been Arrested	4.7%	4.9%	5.1%	4.7%	4.9%	5.1%	
Stolen/Tried to Steal Motor Vehicle	3.0%	3.2%	3.4%	2.9%	3.1%	3.2%	
Carried a Handgun without Permission	2.8%	2.9%	3.1%	2.6%	2.8%	2.9%	
Taken a Handgun to School without Permission	1.2%	1.4%	1.5%	1.2%	1.2%	1.3%	

LCL: 95% Lower confidence limit. HCL: 95% Upper confidence limit.

Sig Diff: Significant difference at 95% confidence, where plus (+) is higher and minus (-) is lower.

**PRO-SOCIAL BEHAVIORS - Prevalence during Prior Year
OSA Region II vs Maine, Grades 6-12, 2006**



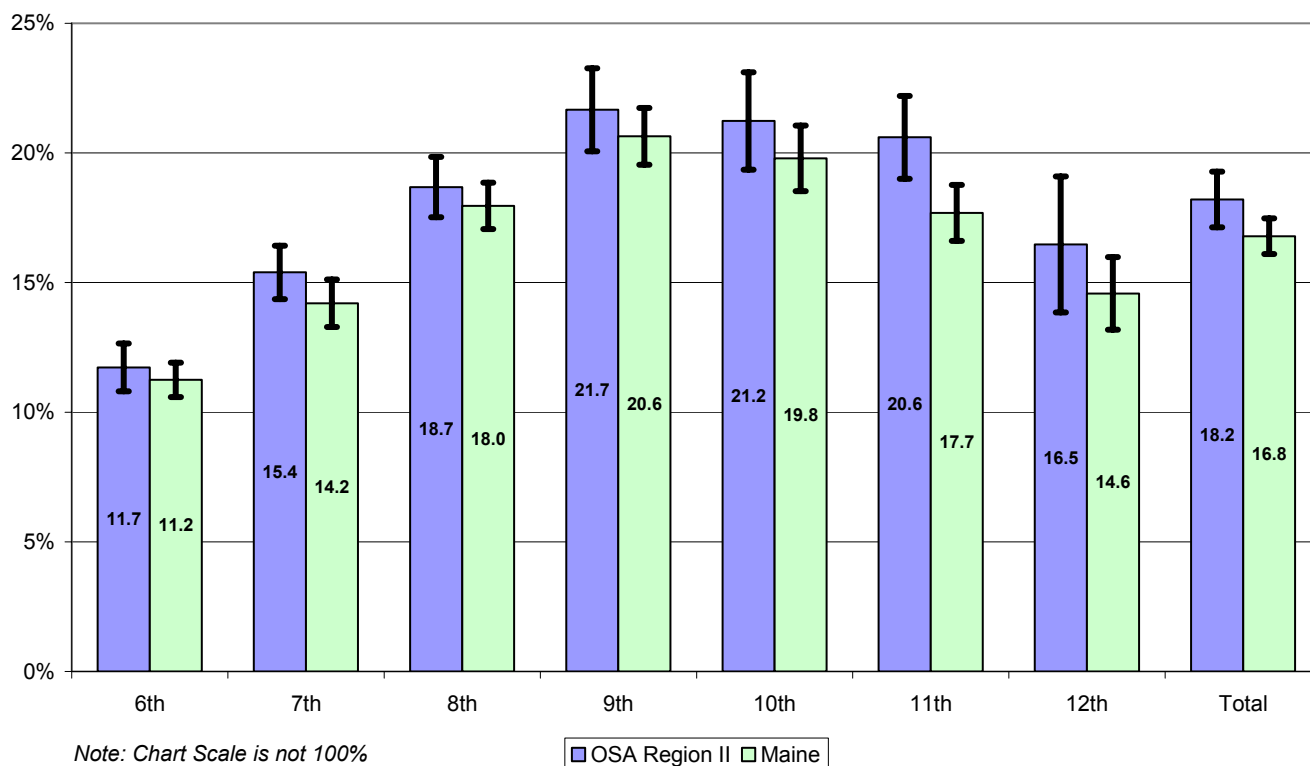
**PRO-SOCIAL BEHAVIORS - Prevalence during Prior Year
OSA Region II vs Maine, Grades 6-12, 2006**

Behavior	OSA Region II			Maine			Sig Diff
	LCL	%	UCL	LCL	%	UCL	
Participated in clubs, organizations, and activities at school	80.0%	80.6%	81.1%	81.7%	82.2%	82.6%	-
Done extra work on your own for school	75.3%	75.9%	76.4%	76.7%	77.2%	77.6%	-
Volunteered to do community service	51.7%	53.1%	54.5%	54.5%	55.4%	56.4%	-

LCL: 95% Lower confidence limit. HCL: 95% Upper confidence limit.

Sig Diff: Significant difference at 95% confidence, where plus (+) is higher and minus (-) is lower.

**Prevalence of Students Feeling Unsafe at School
OSA Region II vs Maine, by Grade, 2006**



**Prevalence of Students Feeling Unsafe at School
OSA Region II vs Maine, by Grade, 2006**

Grade	OSA Region II			Maine			Sig Diff
	LCL	%	UCL	LCL	%	UCL	
6th	10.8%	11.7%	12.7%	10.6%	11.2%	11.9%	
7th	14.4%	15.4%	16.4%	13.3%	14.2%	15.1%	
8th	17.5%	18.7%	19.8%	17.1%	18.0%	18.9%	
9th	20.1%	21.7%	23.3%	19.5%	20.6%	21.7%	
10th	19.4%	21.2%	23.1%	18.5%	19.8%	21.1%	
11th	19.0%	20.6%	22.2%	16.6%	17.7%	18.8%	+
12th	13.8%	16.5%	19.1%	13.2%	14.6%	16.0%	
Total	17.1%	18.2%	19.3%	16.1%	16.8%	17.5%	

LCL: 95% Lower confidence limit. HCL: 95% Upper confidence limit.

Sig Diff: Significant difference at 95% confidence, where plus (+) is higher and minus (-) is lower.

**Prevalence of Students “At Risk” - Grade 6
OSA Region II vs Maine, 2006**

Community Risk Factors	OSA Region II			Maine			Sig Diff
	LCL	%	UCL	LCL	%	UCL	
Laws and Norms Favorable to Drug Use	36.9%	38.2%	39.4%	36.3%	37.4%	38.5%	
Perceived Availability of Drugs	24.3%	25.4%	26.5%	25.4%	26.1%	26.9%	
Perceived Availability of Handguns	20.9%	22.0%	23.1%	20.7%	21.3%	22.0%	
Family Risk Factors							
Poor Family Management	32.2%	33.5%	34.8%	33.6%	34.3%	35.1%	
Family History of Antisocial Behavior	29.0%	30.6%	32.1%	27.9%	29.1%	30.3%	
Parental Attitude Favorable to Drug Use*	11.1%	11.7%	12.3%	10.8%	11.3%	11.8%	
Parental Attitude Favorable to Antisocial Behavior*	29.4%	30.7%	32.0%	30.4%	31.2%	32.1%	
School Risk Factors							
Lower Academic Achievement	42.2%	43.3%	44.4%	41.3%	42.2%	43.0%	
Low Commitment to School	48.7%	50.1%	51.5%	48.6%	49.7%	50.8%	
Peer/Individual Risk Factors							
Rebelliousness	39.4%	40.9%	42.4%	39.5%	40.6%	41.6%	
Early Initiation of Drug Use	19.9%	21.0%	22.0%	20.2%	20.9%	21.6%	
Attitudes Favorable to Antisocial Behavior	41.2%	42.8%	44.5%	43.2%	44.4%	45.7%	
Attitudes Favorable to Drug Use	16.3%	17.2%	18.1%	16.7%	17.3%	18.0%	
Intention to Use Drugs	43.2%	44.6%	46.0%	45.1%	46.0%	46.8%	
Perceived Risk of Drug Use	22.6%	23.9%	25.2%	21.7%	22.6%	23.4%	
Interaction with Antisocial Peers	30.4%	31.7%	33.0%	29.5%	30.7%	31.9%	
Friends' Use of Drugs	19.1%	20.1%	21.1%	19.0%	20.0%	20.9%	
Sensation Seeking	39.5%	40.9%	42.4%	40.8%	41.9%	43.0%	
Rewards for Antisocial Behavior	20.3%	21.5%	22.7%	21.1%	22.3%	23.4%	

* “Favor” does not necessarily mean parents favor the activity. These items are the students’ perception of parental attitudes. Students may perceive their parents as believing the behavior or drug use is wrong, but if parents are not perceived as thinking it is **“very wrong”**, then the student is at increased risk of participating in the undesirable behavior. “Antisocial Behavior” refers to stealing something worth more than \$5, drawing graffiti, and picking a fight with someone. ”Drug use” refers to the use of alcohol, cigarettes, and marijuana.

**Prevalence of Students "Protected" - Grade 6
OSA Region II vs Maine, 2006**

	OSA Region II			Maine			Sig Diff
	LCL	%	UCL	LCL	%	UCL	
Community Protective Factors							
Community Opportunities for Positive Involvement	49.3%	50.4%	51.5%	51.2%	52.3%	53.4%	
Community Rewards for Positive Involvement	48.1%	49.0%	50.0%	48.5%	49.4%	50.3%	
Family Protective Factors							
Family Attachment	55.6%	57.4%	59.1%	56.8%	57.8%	58.9%	
Family Opportunities for Positive Involvement	59.6%	61.0%	62.4%	60.0%	60.9%	61.8%	
Family Rewards for Positive Involvement	55.7%	57.0%	58.3%	56.1%	57.0%	57.9%	
School Protective Factors							
School Opportunities for Positive Involvement	58.6%	60.3%	62.0%	61.3%	62.3%	63.3%	
School Rewards for Positive Involvement	58.8%	60.6%	62.4%	59.3%	60.8%	62.2%	
Peer/Individual Protective Factors							
Social Skills	74.1%	75.3%	76.5%	73.9%	74.9%	75.9%	
Belief in the Moral Order	63.9%	65.5%	67.1%	64.7%	66.0%	67.3%	

**Prevalence of Students “At Risk” - Grade 8
OSA Region II vs Maine, 2006**

	OSA Region II			Maine			Sig Diff
	LCL	%	UCL	LCL	%	UCL	
Community Risk Factors							
Laws and Norms Favorable to Drug Use	39.3%	41.0%	42.7%	37.1%	38.2%	39.3%	
Perceived Availability of Drugs	29.3%	30.6%	31.8%	29.7%	30.7%	31.8%	
Perceived Availability of Handguns	35.0%	36.5%	38.1%	34.5%	35.4%	36.4%	
Family Risk Factors							
Poor Family Management	40.5%	42.2%	43.9%	41.9%	42.8%	43.7%	
Family History of Antisocial Behavior	34.1%	35.7%	37.3%	31.8%	32.8%	33.8%	+
Parental Attitude Favorable to Drug Use*	23.6%	24.8%	26.0%	22.7%	23.5%	24.3%	
Parental Attitude Favorable to Antisocial Behavior*	45.3%	46.8%	48.4%	45.3%	46.3%	47.3%	
School Risk Factors							
Lower Academic Achievement	47.9%	49.6%	51.4%	46.8%	47.8%	48.8%	
Low Commitment to School	47.0%	49.0%	51.0%	47.8%	49.1%	50.3%	
Peer/Individual Risk Factors							
Rebelliousness	34.4%	35.9%	37.3%	33.4%	34.3%	35.1%	
Early Initiation of Drug Use	23.3%	24.3%	25.3%	22.3%	23.3%	24.2%	
Attitudes Favorable to Antisocial Behavior	41.5%	43.2%	44.9%	40.6%	41.7%	42.8%	
Attitudes Favorable to Drug Use	27.2%	28.6%	29.9%	27.0%	28.0%	28.9%	
Intention to Use Drugs	29.0%	30.2%	31.4%	29.2%	30.4%	31.6%	
Perceived Risk of Drug Use	35.8%	37.0%	38.2%	35.1%	36.1%	37.2%	
Interaction with Antisocial Peers	44.2%	46.5%	48.9%	44.3%	45.6%	47.0%	
Friends' Use of Drugs	32.5%	33.7%	35.0%	32.2%	33.4%	34.6%	
Sensation Seeking	44.4%	45.9%	47.4%	43.9%	44.9%	45.9%	
Rewards for Antisocial Behavior	35.0%	36.8%	38.6%	36.5%	37.8%	39.1%	

* “Favor” does not necessarily mean parents favor the activity. These items are the students’ perception of parental attitudes. Students may perceive their parents as believing the behavior or drug use is wrong, but if parents are not perceived as thinking it is “**very wrong**”, then the student is at increased risk of participating in the undesirable behavior. “Antisocial Behavior” refers to stealing something worth more than \$5, drawing graffiti, and picking a fight with someone. ”Drug use” refers to the use of alcohol, cigarettes, and marijuana.

**Prevalence of Students "Protected" - Grade 8
OSA Region II vs Maine, 2006**

	OSA Region II			Maine			Sig Diff
	LCL	%	UCL	LCL	%	UCL	
Community Protective Factors							
Community Opportunities for Positive Involvement	44.2%	45.8%	47.4%	46.9%	47.9%	48.9%	
Community Rewards for Positive Involvement	30.5%	32.1%	33.8%	32.6%	33.5%	34.5%	
Family Protective Factors							
Family Attachment	48.0%	49.6%	51.1%	50.3%	51.2%	52.1%	
Family Opportunities for Positive Involvement	57.4%	59.1%	60.8%	59.4%	60.3%	61.2%	
Family Rewards for Positive Involvement	59.6%	61.0%	62.3%	61.8%	62.6%	63.5%	
School Protective Factors							
School Opportunities for Positive Involvement	65.8%	67.2%	68.7%	67.1%	68.3%	69.4%	
School Rewards for Positive Involvement	55.4%	57.0%	58.6%	57.5%	58.8%	60.0%	
Peer/Individual Protective Factors							
Social Skills	63.9%	65.0%	66.2%	64.9%	65.9%	66.9%	
Belief in the Moral Order	60.7%	62.2%	63.8%	61.6%	62.7%	63.8%	

**Prevalence of Students “At Risk” - Grade 10
OSA Region II vs Maine, 2006**

	OSA Region II			Maine			Sig Diff
	LCL	%	UCL	LCL	%	UCL	
Community Risk Factors							
Laws and Norms Favorable to Drug Use	51.4%	52.8%	54.3%	49.5%	50.7%	51.8%	
Perceived Availability of Drugs	41.0%	42.8%	44.7%	41.6%	42.7%	43.8%	
Perceived Availability of Handguns	21.4%	23.0%	24.6%	20.4%	21.2%	22.1%	
Family Risk Factors							
Poor Family Management	44.1%	45.2%	46.4%	43.1%	44.0%	44.9%	
Family History of Antisocial Behavior	40.4%	41.8%	43.2%	38.1%	39.1%	40.1%	+
Parental Attitude Favorable to Drug Use*	42.1%	43.5%	44.9%	42.1%	43.1%	44.1%	
Parental Attitude Favorable to Antisocial Behavior*	52.2%	53.3%	54.5%	52.3%	53.4%	54.4%	
School Risk Factors							
Lower Academic Achievement	47.3%	48.8%	50.3%	46.5%	47.5%	48.5%	
Low Commitment to School	46.9%	49.0%	51.1%	47.3%	48.5%	49.7%	
Peer/Individual Risk Factors							
Rebelliousness	39.9%	40.9%	41.9%	39.6%	40.3%	40.9%	
Early Initiation of Drug Use	30.5%	31.9%	33.4%	30.6%	31.5%	32.4%	
Attitudes Favorable to Antisocial Behavior	50.9%	52.1%	53.3%	50.2%	51.3%	52.4%	
Attitudes Favorable to Drug Use	42.6%	44.1%	45.5%	43.4%	44.3%	45.2%	
Intention to Use Drugs	45.4%	46.5%	47.7%	46.2%	47.0%	47.8%	
Perceived Risk of Drug Use	43.7%	45.0%	46.2%	43.0%	44.0%	44.9%	
Interaction with Antisocial Peers	50.5%	52.0%	53.4%	49.6%	50.6%	51.7%	
Friends' Use of Drugs	42.8%	44.6%	46.4%	43.1%	44.2%	45.4%	
Sensation Seeking	47.4%	48.7%	50.1%	47.2%	48.1%	49.0%	
Rewards for Antisocial Behavior	45.0%	46.5%	47.9%	47.1%	48.0%	48.8%	

* “Favor” does not necessarily mean parents favor the activity. These items are the students’ perception of parental attitudes. Students may perceive their parents as believing the behavior or drug use is wrong, but if parents are not perceived as thinking it is “**very wrong**”, then the student is at increased risk of participating in the undesirable behavior. “Antisocial Behavior” refers to stealing something worth more than \$5, drawing graffiti, and picking a fight with someone. ”Drug use” refers to the use of alcohol, cigarettes, and marijuana.

**Prevalence of Students "Protected" - Grade 10
OSA Region II vs Maine, 2006**

	OSA Region II			Maine			Sig Diff
	LCL	%	UCL	LCL	%	UCL	
Community Protective Factors							
Community Opportunities for Positive Involvement	40.5%	41.9%	43.4%	41.9%	42.9%	43.9%	
Community Rewards for Positive Involvement	40.2%	41.7%	43.1%	41.8%	42.7%	43.6%	
Family Protective Factors							
Family Attachment	42.7%	43.9%	45.1%	44.7%	45.6%	46.5%	
Family Opportunities for Positive Involvement	51.2%	52.1%	53.0%	52.5%	53.4%	54.3%	
Family Rewards for Positive Involvement	53.0%	54.0%	55.0%	55.3%	56.1%	57.0%	-
School Protective Factors							
School Opportunities for Positive Involvement	63.7%	65.3%	66.9%	63.7%	64.9%	66.0%	
School Rewards for Positive Involvement	64.2%	65.4%	66.7%	65.3%	66.4%	67.5%	
Peer/Individual Protective Factors							
Social Skills	51.2%	52.3%	53.4%	51.7%	52.6%	53.5%	
Belief in the Moral Order	62.4%	63.7%	65.1%	63.2%	64.1%	65.0%	

**Prevalence of Students “At Risk” - Grade 12
OSA Region II vs Maine, 2006**

	OSA Region II			Maine			Sig Diff
	LCL	%	UCL	LCL	%	UCL	
Community Risk Factors							
Laws and Norms Favorable to Drug Use	49.7%	51.6%	53.5%	48.1%	49.6%	51.2%	
Perceived Availability of Drugs	45.0%	46.7%	48.4%	47.6%	48.5%	49.4%	
Perceived Availability of Handguns	23.6%	24.7%	25.8%	23.6%	24.6%	25.6%	
Family Risk Factors							
Poor Family Management	45.2%	46.8%	48.5%	45.0%	45.9%	46.7%	
Family History of Antisocial Behavior	38.7%	40.1%	41.5%	36.8%	38.0%	39.2%	
Parental Attitude Favorable to Drug Use*	46.1%	47.9%	49.6%	45.3%	46.3%	47.3%	
Parental Attitude Favorable to Antisocial Behavior*	50.4%	52.1%	53.8%	50.3%	51.3%	52.4%	
School Risk Factors							
Lower Academic Achievement	42.2%	43.8%	45.4%	41.3%	42.2%	43.1%	
Low Commitment to School	45.9%	47.6%	49.3%	46.2%	47.4%	48.5%	
Peer/Individual Risk Factors							
Rebelliousness	36.4%	37.9%	39.3%	37.1%	38.0%	38.9%	
Early Initiation of Drug Use	32.0%	33.5%	35.0%	31.9%	32.9%	33.9%	
Attitudes Favorable to Antisocial Behavior	46.0%	47.5%	49.0%	46.2%	47.5%	48.8%	
Attitudes Favorable to Drug Use	41.9%	43.3%	44.7%	42.9%	44.1%	45.4%	
Intention to Use Drugs	33.6%	35.0%	36.3%	34.5%	35.5%	36.6%	
Perceived Risk of Drug Use	51.2%	53.3%	55.3%	51.1%	52.3%	53.5%	
Interaction with Antisocial Peers	49.4%	50.8%	52.2%	48.5%	49.6%	50.6%	
Friends' Use of Drugs	41.3%	42.7%	44.2%	41.9%	43.1%	44.4%	
Sensation Seeking	46.7%	48.1%	49.4%	47.4%	48.4%	49.4%	
Rewards for Antisocial Behavior	56.1%	58.4%	60.7%	58.8%	60.3%	61.8%	

* “Favor” does not necessarily mean parents favor the activity. These items are the students’ perception of parental attitudes. Students may perceive their parents as believing the behavior or drug use is wrong, but if parents are not perceived as thinking it is “**very wrong**”, then the student is at increased risk of participating in the undesirable behavior. “Antisocial Behavior” refers to stealing something worth more than \$5, drawing graffiti, and picking a fight with someone. ”Drug use” refers to the use of alcohol, cigarettes, and marijuana.

**Prevalence of Students "Protected" - Grade 12
OSA Region II vs Maine, 2006**

	OSA Region II			Maine			Sig Diff
	LCL	%	UCL	LCL	%	UCL	
Community Protective Factors							
Community Opportunities for Positive Involvement	41.1%	43.1%	45.1%	41.2%	42.4%	43.6%	
Community Rewards for Positive Involvement	40.9%	42.7%	44.6%	41.8%	42.9%	44.1%	
Family Protective Factors							
Family Attachment	55.8%	57.1%	58.5%	57.2%	58.1%	59.1%	
Family Opportunities for Positive Involvement	51.9%	53.4%	54.9%	53.1%	54.2%	55.3%	
Family Rewards for Positive Involvement	52.3%	54.4%	56.5%	55.8%	56.9%	58.0%	
School Protective Factors							
School Opportunities for Positive Involvement	61.9%	64.3%	66.7%	63.3%	64.7%	66.1%	
School Rewards for Positive Involvement	50.4%	52.4%	54.4%	51.9%	53.5%	55.1%	
Peer/Individual Protective Factors							
Social Skills	60.1%	61.5%	62.9%	60.8%	61.7%	62.7%	
Belief in the Moral Order	52.1%	53.7%	55.3%	52.3%	53.4%	54.5%	